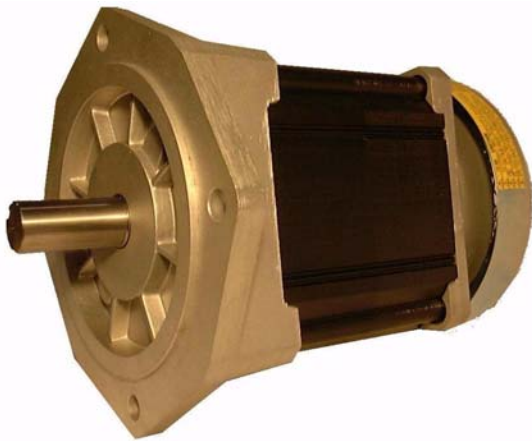


# Rocky Mountain Technologies, Inc.

## *SRB280 Switched Reluctance Motor*



- **Three Phase, Low Noise Construction**
- **Three Standard Sizes available**
- **Compatible with Our UMC Series of Drives**
- **12 kW to 30 kW Continuous Power**

### ▪ **FEATURES**

- **SR design:** The inherent benefits and simplicity of Switched Reluctance SR-Motors (SRM) allow for high speed and high torque operation at high efficiency. Switched Reluctance Motors operate without magnets.
- **Multiple stack lengths:** Three stack lengths are part of the standard product line. These choices provide a range of motor performance from one flange size, allowing for increased motor torque with the same equipment.
- **Motor Drive Availability:** A range of standard drives as well a custom drive design and manufacturing capability allow for an optimally matched system. Please contact us for more information.
- **High torque and efficiency:** The SR-motor allows for simplification of the system design and improvement of total system efficiency.
- **Flexibility in motor winding selection:** A range of standard windings has been selected for common operating voltages. Production motors can be tailored for specification application profiles to optimize the performance and efficiency.
- **Regenerative capability:** The SR motor technology is well suited for both motor and power generating applications. For electric vehicle applications, four quadrant regenerative braking allows recharging of the batteries during braking and dramatically improves the range.

## SPECIFICATIONS

Model No.	HP Peak	HP Cont.	Peak Torque ft-lb (Nm)	Max speed rpm	Shaft OD inch/mm	Weight lbs. (kg)
SRB280S	30	17	15 (20)	12,000	1.496 (38)	38 (17.2)
SRB280M	50	29	26 (35)	12,000	1.496 (38)	46 (20.9)
SRB280L	65	36	33 (45)	12,000	1.496 (38)	58 (26.3)

All data taken at a 6,000 RPM base speed. The SRB280 is a Switched Reluctance motor that is well suited for traction applications. The high starting torque and efficiency makes it well suited for light vehicle and other demanding application. The motor uses a 12/10 topology in a three-phase configuration.

### Model Overall motor length w/ shaft

SRB280S	8.74 in (222 mm)
SRB280M	9.92 in (252 mm)
SRB280L	11.10 in (282 mm)

### Other dimensions:

Flange bolt holes: 0.669 in (17 mm), 4 places

Flange size: 11 in (280 mm)  
flange diameter to bolt centers

### GENERAL SPECIFICATIONS

Peak Efficiency: 95.8%

Max. winding temp: 180°C

Connection: 6 winding leads  
6 sensor wires

Standard voltages: 350VDC  
Custom windings available  
upon request

### Rocky Mountain Technologies Inc.

PO 210  
Basin, MT 59631

Tel: (406) 552-4260

Fax: : (406) 552-4261

e-mail: [info@RockyMountainTechnologies.com](mailto:info@RockyMountainTechnologies.com)

web: [www.RockyMountainTechnologies.com](http://www.RockyMountainTechnologies.com)

Rev 3 © 2012 by RMT Inc

Specification subject to change without notice.